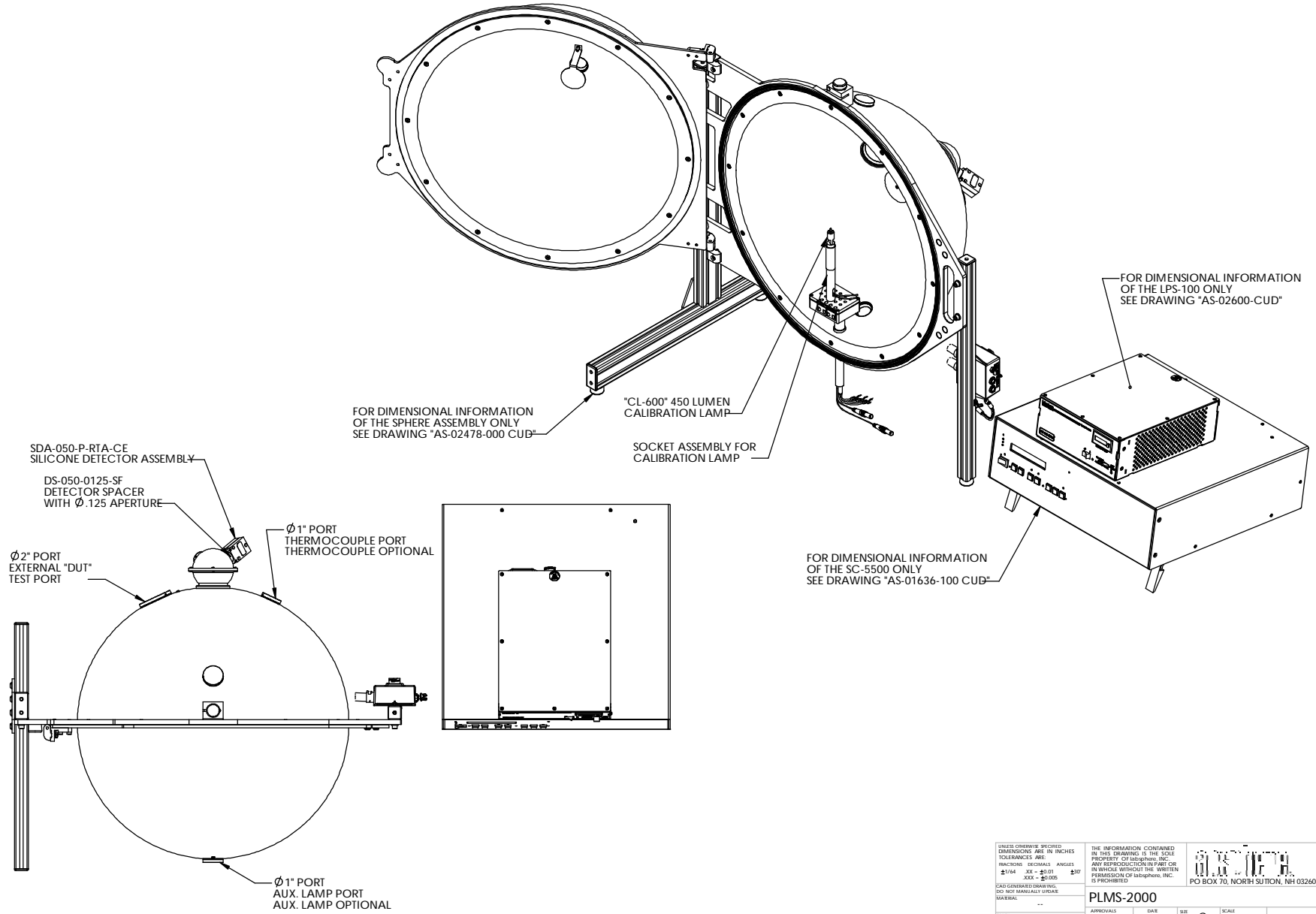


UNLESS OTHERWISE SPECIFIED, DIMENSIONS ARE IN INCHES		ALL DIMENSIONS ARE TO CENTER UNLESS OTHERWISE SPECIFIED		TOLERANCES ARE:		FRACTIONS DECIMALS ANGLES		 PO BOX 70, NORTH SUTTON, NH 03260	
±.001	±.005	±.001	±.005	±.001	±.005	±.001	±.005	PLMS-1000	
DO NOT SCALE DRAWING	DATE	APPROVAL	SCALE	SHEET	OF	SHEET 1 OF 1 AS-02477-100 CUD 3			
	12-29-2004	C. SHAEFFER	C	1-4	1				

NOTE:

- 1 - CABLE (10 FEET LONG) FROM LPS-100 TO SPHERE NOT SHOWN BUT INCLUDED WITH SYSTEM.
- 2 - TRIAX CABLE (3 METERS LONG) FROM SC-5500 TO SDA-050-P-RTA-CE NOT SHOWN BUT INCLUDED WITH SYSTEM.



FOR DIMENSIONAL INFORMATION OF THE SPHERE ASSEMBLY ONLY SEE DRAWING "AS-02478-000 CUD"

FOR DIMENSIONAL INFORMATION OF THE LPS-100 ONLY SEE DRAWING "AS-02600-CUD"

FOR DIMENSIONAL INFORMATION OF THE SC-5500 ONLY SEE DRAWING "AS-01636-100 CUD"

UNLESS OTHERWISE SPECIFIED, DIMENSIONS ARE IN INCHES. TOLERANCES ARE: FINISHES ARE: ANGLES ARE: ±1/64 XX - ±0.01 XXX - ±0.005		THE INFORMATION CONTAINED IN THIS DRAWING IS THE PROPERTY OF LPS-SPHRE, INC. ANY REPRODUCTION IN PART OR IN WHOLE WITHOUT THE WRITTEN PERMISSION OF LPS-SPHRE, INC. IS PROHIBITED.	
DRAWING NO. PLMS-2000		PO BOX 70, NORTH SUITON, NH 03260	
DATE: 12/30/2004	SCALE: 1:5	SHEET: 1 OF 1	REV: 1
DRAWN BY: C. SHAFFER		DWG. NO.: AS-02478-100 CUD	