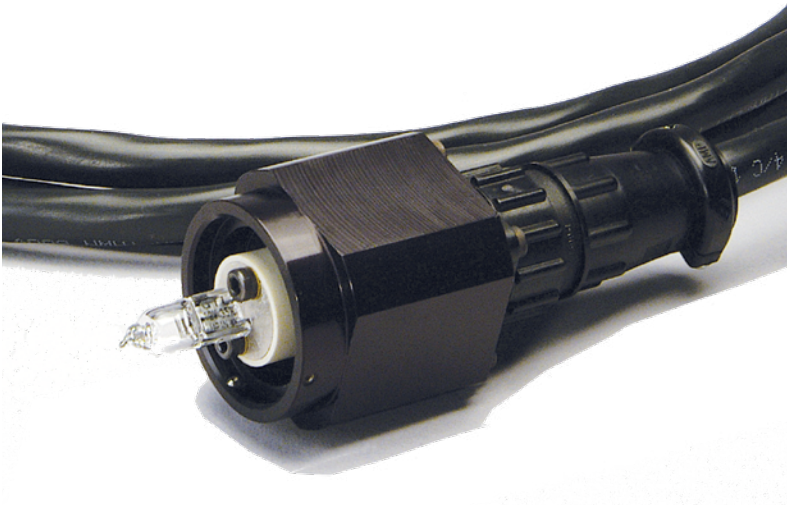


HALOGEN LIGHT SOURCE ASSEMBLIES

Stable tungsten halogen light sources specially designed for uniform radiance systems



ACCURATE

Labsphere's tungsten halogen light source assemblies are designed to ensure uniform radiance from integrating sphere sources and greater efficiency for light input attenuation and filtering. All lamps operate at about 3000K for exceptional additive linear spectral distribution.

FEATURES:

- Operate at 3000K for exceptional linear dynamic spectral distribution
- Compatible with Labsphere's modular and uniform source spheres
- Operate with Labsphere's precision lamp power supplies
- Long rated life for greater radiance stability

BEST FOR:

- Uniform Radiance Source System Design
- Research and Development Prototyping

IHLS INTERNAL HALOGEN LIGHT SOURCES

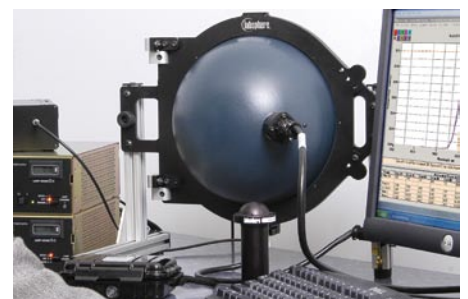
The internal halogen light source assemblies are designed to give you the ability to easily alter the amount of radiance you are producing from an integrating sphere source. With the quick twist of a screw, the IHLS- 100 lamp securely mounts onto a 1-inch Labsphere port frame, steadily positioning the lamp inside the integrating sphere. Each mounted light source consists of a tungsten halogen lamp, lamp housing, and a 10-foot cable.

The IHLS-DM direct mount light sources are specially designed for uniform light sources of 40 inches and greater diameters. The single contact recessed tungsten halogen lamp securely mounts into the sphere wall to give you added flexibility when designing uniform radiance systems to meet your specific application requirements.

EHLS EXTERNAL HALOGEN LIGHT SOURCES

The external halogen light source assemblies are designed to give you the ultimate flexibility with your integrating sphere light source. The EHLS projects light into the integrating sphere allowing you to place light attenuators and filter holders in the beam path. Add a variable attenuator to vary the light input or an optical filter to alter the spectral distribution.

Each EHLS consists of a tungsten halogen lamp with a dichroic or rhodium reflector mounted in a lamp housing. A simple twist of a screw securely mounts the lamp onto a 1-inch Labsphere port frame. The lamp is positioned outside the integrating sphere wall and stable radiance is projected into the integrating sphere. Each light source consists of a tungsten halogen lamp, lamp housing with integrated reflector and diffuser, and a 3 meter cable.



Specifications

Model Number	Order number	Nominal Power (W)	Current (A)	Nominal Voltage (V)	Luminous Flux (LMS)	Color Temp (K)	Est. Life (hrs.)	Mounting
IHLS-100-005	AS-02631-005	5	0.42	12	60	3000	2000	Port Frame
IHLS-100-010	AS-02631-010	10	1.67	6	150	2950	1000	Port Frame
IHLS-100-035	AS-02631-035	40	3.07	13.3	700	3000	600	Port Frame
IHLS-100-075	AS-02631-075	75	6.25	12	1400	3000	2000	Port Frame
IHLS-100-100	AS-02631-100	100	8.33	12	2000	3000	2000	Port Frame
Direct Mount								
IHLS-DM-045	N/A	52	6.76	7.7	890	3000	283	Direct
IHLS-DM-150	N/A	177	6.35	28	2700	2950	740	Direct
External Light Sources, Dichroniuc Reflector¹								
EHLS-100-20D	AS-02640-020	20	1.67	12	200	3000	4000	Port Frame
EHLS-100-30D	AS-02640-030	30	2.78	10.8	600	3100	200	Port Frame
EHLS-100-75D	AS-02640-075	75	6.25	12	1400	3000	4000	Port Frame
EHLS-100-120D	AS-02640-120	120	6.86	17.5	2775	3200	130	Port Frame
External Light Sources, Rhodium Reflector²								
EHLS-100-035R	AS-02630-35	40	3.07	13.3	700	3000	600	Port Frame
EHLS-100-075R	AS-02630-75	75	6.25	12	1400	3000	2000	Port Frame
EHLS-100-100R	AS-02630-100	100	8.33	12	2000	3000	2000	Port Frame

¹The dichroic reflector transmits the IR radiation through the reflector while reflecting the visible light into the projected area.

²The rhodium reflector efficiently reflect the UV-VIS-NIR into the projected area.

Lamp Assembly and Power Supply Compatibility

Model Number	Power Supply	Order Number
IHLS-100-005	LPS-100-0042	AS-02600-042
IHLS-100-010	LPS-100-0167	AS-02600-167
IHLS-100-035	LPS-100-0307	AS-02600-307
IHLS-100-075	LPS-100-0625	AS-02600-625
IHLS-100-100	LPS-100-0833	AS-02600-833
IHLS-DM-45	LPS-100-0676	AS-02600-676
IHLS-DM-150	LPS-150-0635	AS-02656-635
EHLS-100-20D	LPS-100-0167	AS-02600-167
EHLS-100-30D	LPS-100-0278	AS-02600-278
EHLS-100-75D	LPS-100-062	AS-02600-625
EHLS-100-120D	LPS-150-0685	AS-02656-685
EHLS-100-035R	LPS-100-0307	AS-02600-307
EHLS-100-75R	LPS-100-0625	AS-02600-625
EHLS-100-100R	LPS-100-0833	AS-02600-833