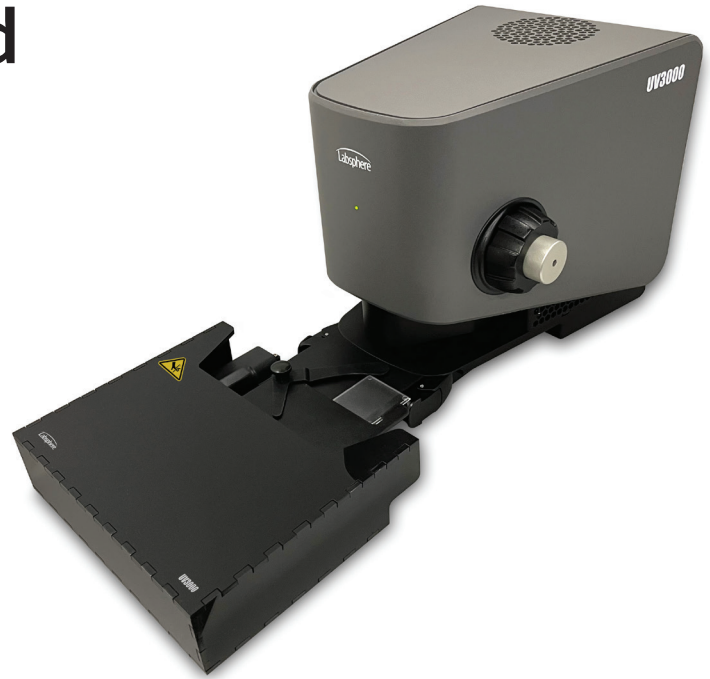


UV3000S Automated Sample Stage

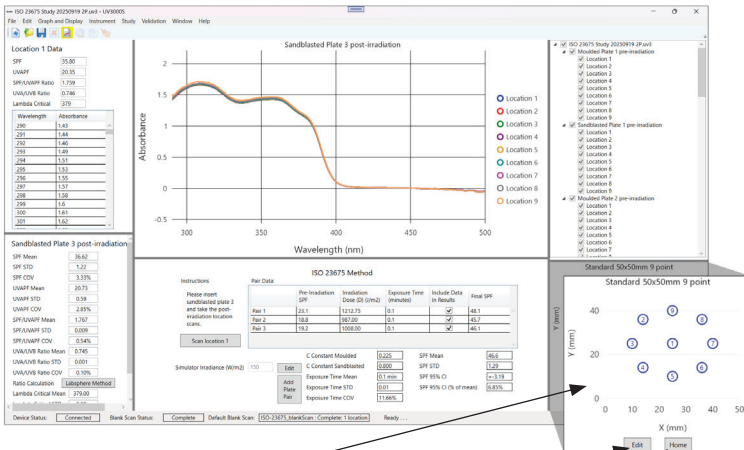
Enhancing efficiency and precision in sample testing

The Automated Sample Stage for the UV3000S is designed for high-throughput testing, delivering faster workflows, improved precision, and highly repeatable results. Using virtual templates in the UV3000S software, the stage automatically moves to predefined test locations and executes scans – eliminating operator variability and ensuring consistent, confidence-inspiring measurements. Powered through the UV3000S five-pin interface on the base instrument and controlled via dedicated USB-C interface, it integrates seamlessly with the instrument and attaches quickly using two over-center draw latches.



Features

- **Motorized Operation:** Designed for repetitive, high-volume use, reducing manual intervention while increasing throughput
- **Enhanced Precision:** Provides accurate, repeatable sample positioning, ensuring consistent test results from one sample plate to the next
- **Easy Attachment:** Attaches to the front of the instrument with two over-center draw latches, similar to the manual stage
- **Virtual Test Templates:** Ability to select standard templates within the UV3000S software or customization for user defined studies
- **Automate Workflows:** The software instructs the stage to move PMMA plate to specific test locations and execute scans according to test method requirements. A nine-point PMMA plate mapping typically takes less than 60 seconds.



Template View: On-screen view of current scan template and sequence

Edit: Switch between standard template options or create your custom template

Home: Retract sample stage to loading and unloading position

Ordering Information and Specifications

Model Name:	Automated Sample Stage - UV3000S
Order Number:	AS-03260-002
Position Repeatability:	±0.02 mm (Based on ability to return to the identical point on 50 mm PMMA sample plate)
ISO 23675 Plate Run Time:	≤ 60 seconds (9-points on a PMMA sample plate)
ISO 24443 Plate Run Time:	≤ 40 seconds (5-points on a PMMA sample plate)
Positioning Accuracy:	±0.35 mm (ISO-style 9-point and 12-point evaluation over a 50 mm PMMA sample plate, UV3000 spot size)
Dimensions: (L x W x H)	28 cm x 25 cm x 3.5 cm (11 in x 10 in x 1.4 in)
Weight:	2.0 kg (4.4 lbs)